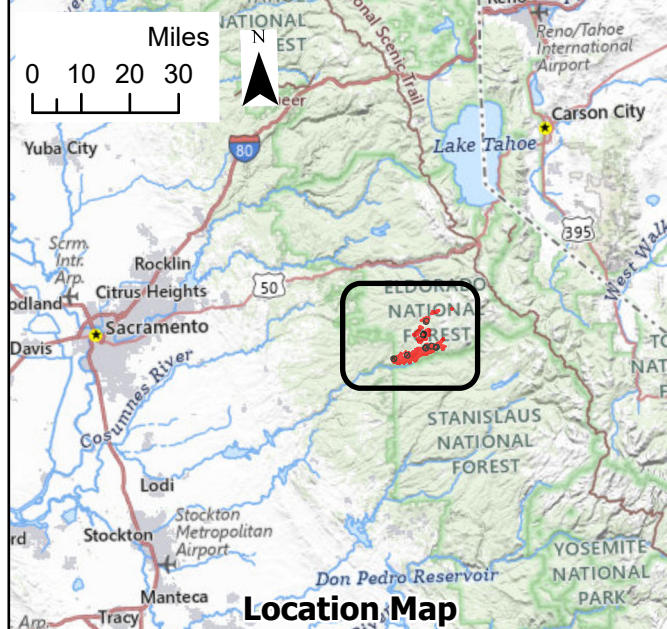
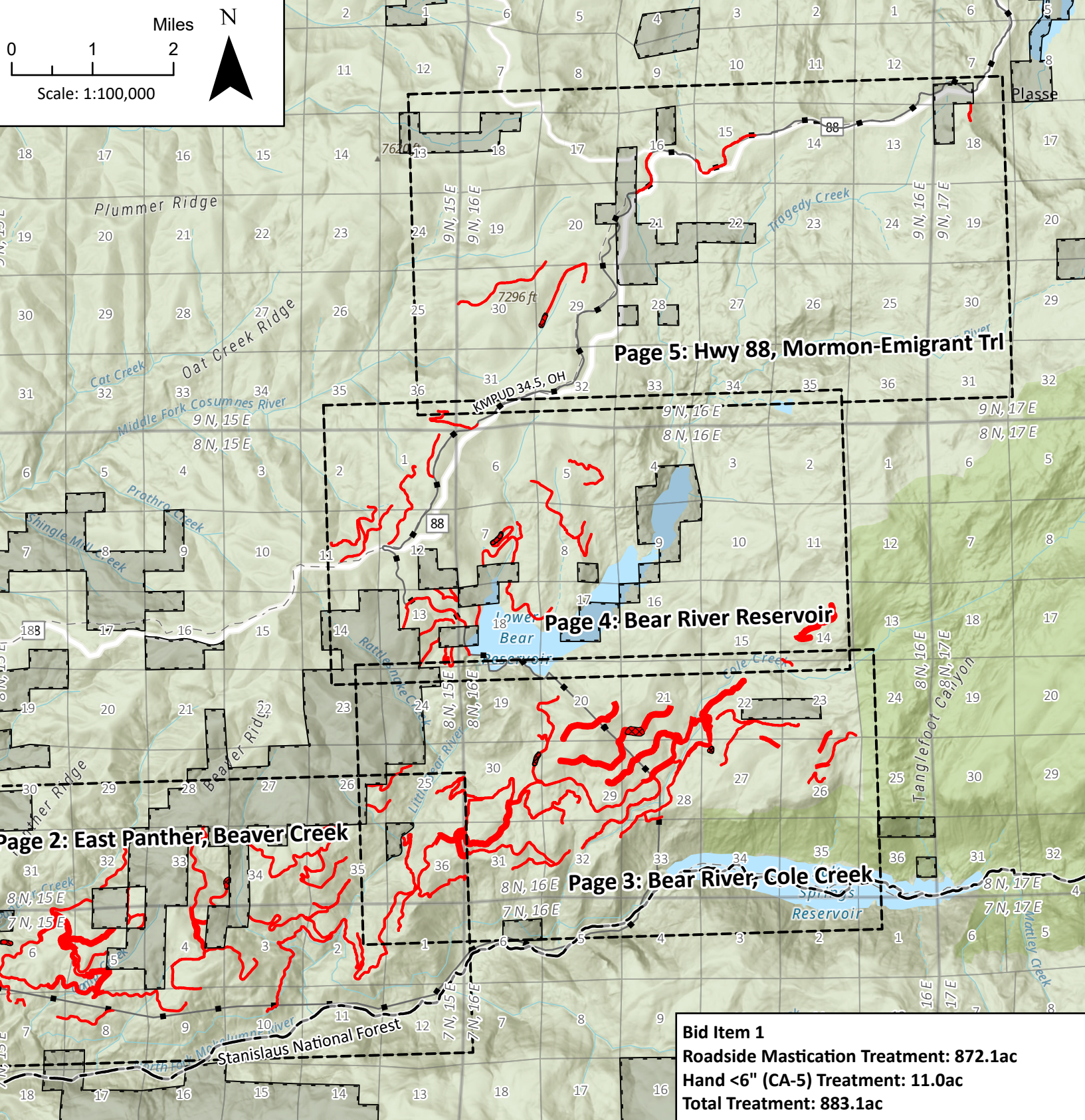


**Bid Item 1. Treatment Units**

Note: The following units are designated Hand <6" (CA-5) Treatment: 5.2C, 26.2C, 58.2C, 71.3C, 87.2C, 106.2C, 120.2C.

Unit ID	Road	Width	Width	Acres	Unit ID	Road	Width	Width	Acres	Unit ID	Road	Width	Width	Acres	Unit ID	Road	Width	Width	Acres
1	08N50	32	32	1.7	31	08N25	32	32	2.9	61.2	08N16	150	32	3.3	96	Bear Reservoir Dam Access	32	32	0.7
2	08N50	32	32	0.9	32	SPUR N1E				62	Cole Creek Road	32	32	9.7	97	Bear Reservoir Dam Access	32	32	5.8
3	08N50	32	32	1.2	33	08N29	32	32	9	63	08N16	150	150	11.8	98	08N20	32	32	1.6
4	07N01	32	32	4.9	34	08N29	32	32	5.5	64.1	08N16	150	32	12.6	100	08N28B	32	32	3.2
5.1	08N50	32	32	3.3	35	08N50	32	32	0.9	64.2	08N16	150	150	3.2	101	08N28B	32	32	1.9
5.2C	08N50	32	32	0.7	36	08N50	32	32	11.2	65	08N16A	150	150	29.5	102	08N30	32	32	3.4
6	08N05	32	32	1.1	37	08N50	32	32	1.5	66	08N16A	150	150	19.7	103	08N20	32	32	3.9
7.1	08N05	32	32	4.8	38	08N50	32	32	1.5	67	08N15	32	32	1.4	104	08N20	32	32	1.8
7.2	08N05	32	150	10.7	39	08N16	32	32	3.3	68	08N15A	32	32	2.7	105	08N20	32	32	6.4
8	08N05	32	32	3	40	08N16	32	32	2.3	69	08N15	32	32	1.9	106.1	08N20C	32	32	3.6
9	08N05	32	32	4.1	41	08N16	32	32	11.7	70	08N12	32	32	6.2	106.2C	08N20C	32	32	1
10.1	07N03	32	32	5.2	42	08N16B	32	32	3.5	71.1	08N12	32	32	6.2	107	08N20	32	32	1.7
10.2	07N03	150	32	20.7	43	08N16F	32	32	6.3	71.2	08N12	150	32	8.5	108	08N21	32	32	6.8
11	07N03	32	32	8.2	44	08N16D	32	32	5.5	71.3C	08N12	32	32	0.6	109	08N21	32	32	3.3
12.1	07N05	150	150	22.9	45.1	08N16	32	32	4.4	74	08N14D	32	32	2.3	110	08N21B	32	32	1.3
12.2	07N05	32	32	1.2	45.2	08N16	150	150	12.2	75.1	08N14	150	32	3.3	111	08N22	32	32	5.1
12.3	07N05	150	32	4.3	46.1	08N06	150	150	13.6	75.2	08N14	32	32	3.6	112	09N25	32	32	6.9
13	08N38	150	150	19.7	46.2	08N06	32	32	8.1	76	08N24A	150	32	6.2	113	09N25	32	32	4.3
14	07N02	150	150	6.7	47	08N06	32	32	3.7	77	08N24	150	32	5.4	114	09N25B	32	32	4
15	07N02	32	32	4.4	48	08N06A	32	32	1.6	79	08N52A	32	32	4	115	08N31B	32	32	7.9
16	08N38	150	150	25.5	49	08N16	32	32	3.5	80	08N52A	32	32	3.2	116	08N31A	32	32	3.5
18	08N38	32	32	1.6	50	08N16	32	32	7.7	81	08N52A	32	32	0.7	117	09N24B	32	32	5.5
19	08N38A	32	32	1.1	51	08N16	32	32	4.7	82	08N52A	32	32	4.3	118	09N24	32	32	0.3
20	08N38B	0	32	1.3	52	08N16	150	150	39.2	83	08N14	32	150	11.1	119	09N68	32	32	8.3
21	07N02	32	32	3.7	53	08N16	32	150	4.8	84	08N13	150	150	33.4	120.1	09N95	32	32	6.8
22	07N02 TIE	32	32	3.1	54	08N16	32	32	4.6	85	08N08	32	32	1	120.2C	09N95	32	32	0.9
23.1	08N25C	32	150	3.4	55	08N16	32	32	3.6	86	08N11	150	150	39.9	121	10N50	32	32	3.8
23.2	08N25C	150	150	7.9	56	08N16	32	32	1.9	87.1	08N11	150	150	28.3	122	16E44	32	32	6.7
24	08N25C	32	32	7	57	08N16	32	32	1.8	87.2C	08N11	150	150	6.3	123	16E49	32	32	1.4
25.1	08N25	150	32	6.8	58.1	08N40	32	32	3	88	08N17	150	150	20.8					
25.2	08N25	32	32	8.2	58.2C	08N40	32	32	0.8	89	08N17	150	150	14.4					
26.1	08N25	32	32	2.3	59	08N40	32	32	5.1	90	08N83	150	150	7.2					
26.2C	08N25	32	32	0.7	60	08N40	32	32	1.4	91	08N83C	150	150	24					
27	08N25	32	32	7.2	61.1	08N16	32	32	10.2	92	08N84	32	32	2.4					
28	08N25	32	32	2.9						93	08N70	32	32	4.8					
29	08N25	32	32	2						94	08N10	32	32	2.6					
30	08N25	32	32	1.2						95	08N10	32	32	4.2					
	SPUR N1																		
	SPUR N1W																		



**Treatment Type**

- Roadside Mastication
- Hand <6" (CA-5)

**Legend**

- National Forest Boundary
- US Forest Service Land
- Non-FS Land
- Electric Transmission Lines
- Page Boundary

**UMRWA Forest Projects Plan Phase 1**

**Arbor Fuel Reduction Project**

**Bid Item 1. Roadside Mastication**

Map Area: Project Overview

Date: May 23, 2024

Page 1 of 5

Upper Mokelumne River Watershed Authority

LANDMARK ENVIRONMENTAL

CAL FIRE

FOREST SERVICE

DEPARTMENT OF AGRICULTURE

Map: A. Price







