

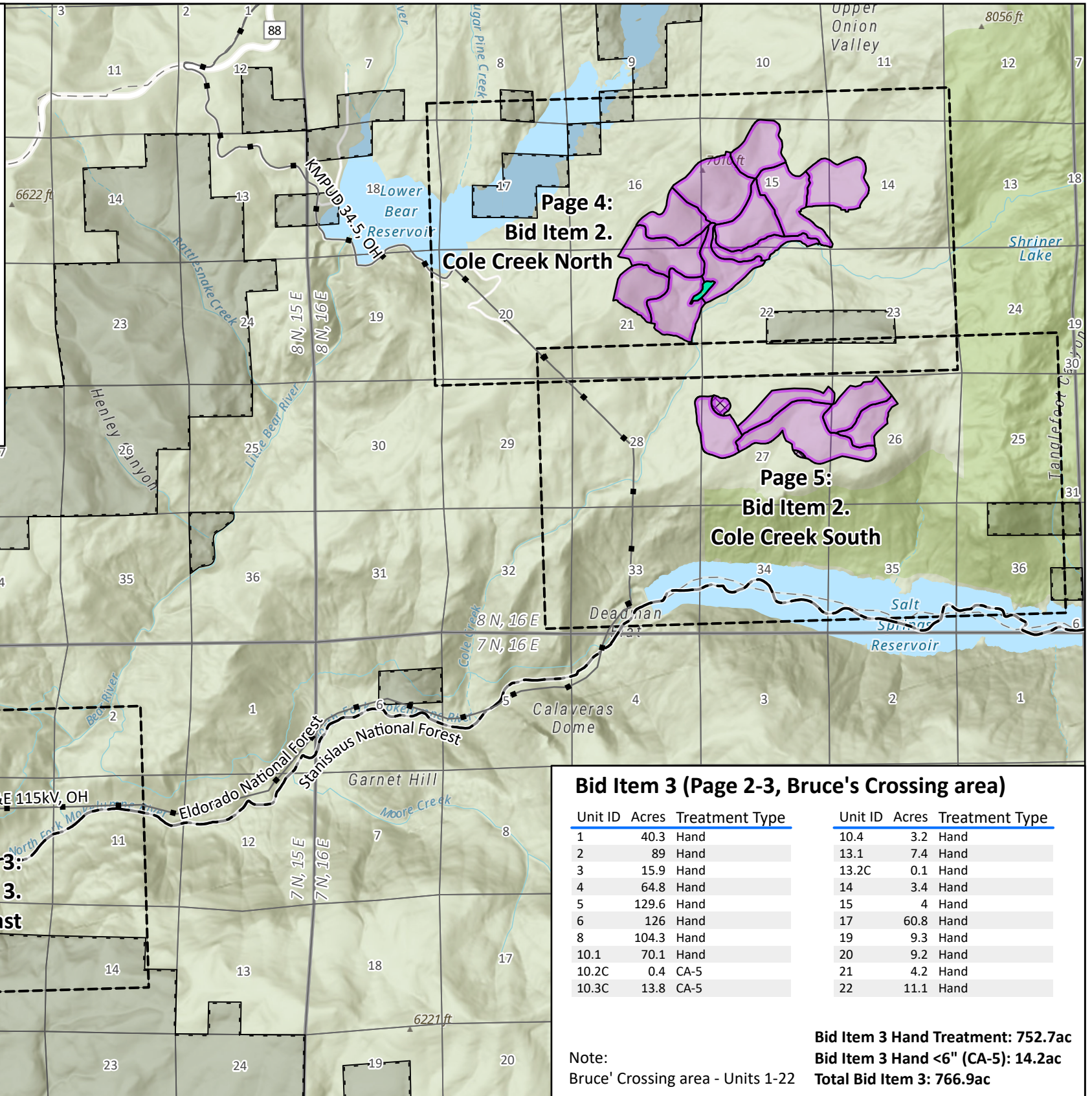


**Bid Item 2
(Page 2-5, Bruce's Crossing & Cole Creek areas)**

Unit ID	Acres	Treatment Type	Unit ID	Acres	Treatment Type
7	19.8	Mechanical	28	99	Mechanical
9	31	Mechanical	29	105	Mechanical
11.1	9.3	Mechanical	30	87.4	Mechanical
11.2	1.5	Mechanical	31	46.1	Mechanical
11.3C	6.1	CA-5	32	66.8	Mechanical
11.4	6.1	Mechanical	33	6	Hand
12	17.3	Mechanical	34	95.8	Mechanical
16	23	Mechanical	35.1	68.1	Mechanical
18	4.4	Mechanical	35.2C	10.1	CA-5
23	70	Mechanical	36	57.8	Mechanical
24	101	Mechanical	37.1	149.9	Mechanical
25	78.6	Mechanical	37.2C	1.7	CA-5
26	130.3	Mechanical	38	47.9	Mechanical
27	75.7	Mechanical	39	67.5	Mechanical

Bid Item 2 Mechanical Treatment: 1,459.2ac
Bid Item 2 Hand <6" (CA-5) : 17.9ac
Total Bid Item 2 : 1,483.1ac

Note: Bruce' Crossing area - Units 1-22, Cole Creek area - Units 23-40

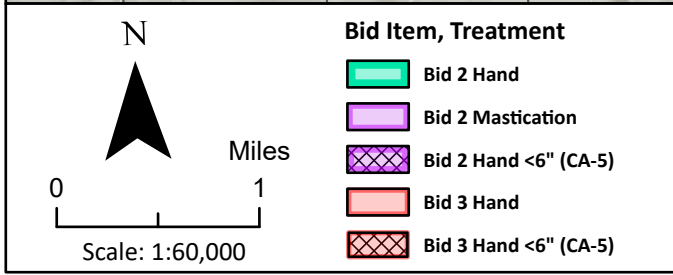


Bid Item 3 (Page 2-3, Bruce's Crossing area)

Unit ID	Acres	Treatment Type	Unit ID	Acres	Treatment Type
1	40.3	Hand	10.4	3.2	Hand
2	89	Hand	13.1	7.4	Hand
3	15.9	Hand	13.2C	0.1	Hand
4	64.8	Hand	14	3.4	Hand
5	129.6	Hand	15	4	Hand
6	126	Hand	17	60.8	Hand
8	104.3	Hand	19	9.3	Hand
10.1	70.1	Hand	20	9.2	Hand
10.2C	0.4	CA-5	21	4.2	Hand
10.3C	13.8	CA-5	22	11.1	Hand

Bid Item 3 Hand Treatment: 752.7ac
Bid Item 3 Hand <6" (CA-5): 14.2ac
Total Bid Item 3: 766.9ac

Note:
Bruce' Crossing area - Units 1-22



**UMRWA Forest Projects Plan Phase 1
Arbor Fuel Reduction Project**
Bid items 2. Mastication & 3. Hand Treatment
 Map Area: Project Overview
 Date: May 23, 2024
 Page 1 of 5

Map: A. Price

